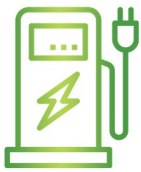


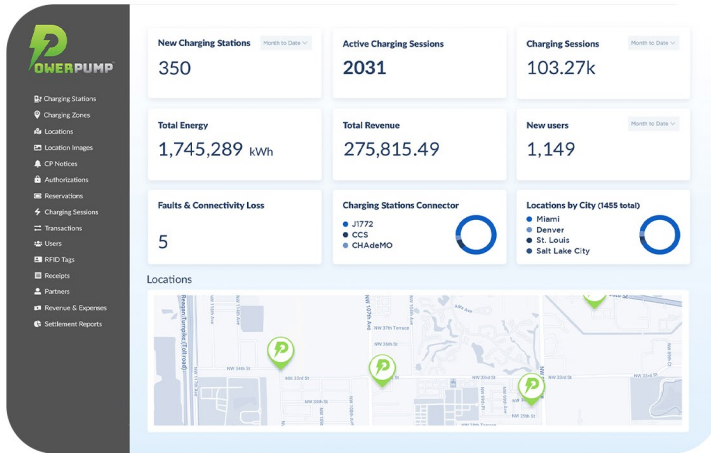


Smart Charging Station Management System

- ✓ Monitors, configures and maintains your charging infrastructure.
- ✓ Real-time analytics & monthly reporting.
- ✓ Manage multiple charging sites and locations.
- ✓ Set pricing per kilowatt hours or by time.
- ✓ Detailed reports on station usage and energy consumption by location.
- ✓ Dynamic load management and smart charging.
- ✓ Works with all charging stations by using standardized communication protocols.
- ✓ Open API and integrations.
- ✓ EV Roaming and direct P2P integration through OCPI



Charging Station Administration – Monitoring

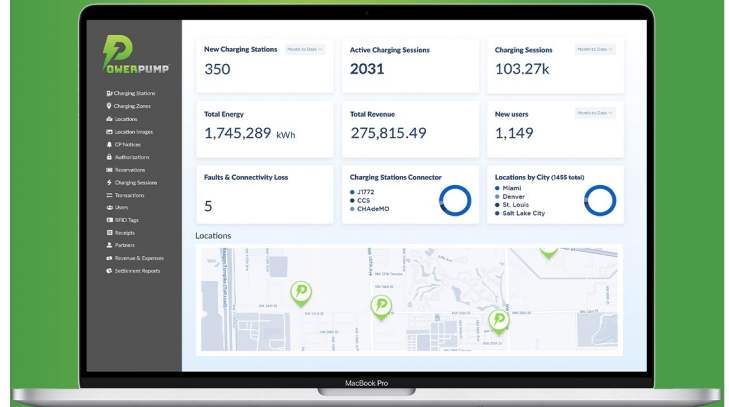


- ✔ General status of the charging infrastructure at a glance.
- ✔ Ensures high availability of your charging infrastructure.
- ✔ Dashboard with status and current consumption values per location/group
 - Operation status (in use / available / inoperative)
 - Actual power consumption
 - Active and planned charging sessions
- ✔ Detailed view on vehicles
 - Assignment of vehicle to charging station and location
 - State of the charging process
- ✔ Overview for completed ongoing and upcoming charging sessions.
- ✔ Detailed status of charging process and vehicle can be displayed.
- ✔ Set pricing by time or per kilowatt hours.
- ✔ Partner management
 - Give access control to your clients to view chargers, reports, and more.
 - Manage users and settlements reports.



Configuration

- ✔ Add charging stations and configure their basic parameters.
- ✔ Define the charging infrastructure topology and create different locations and groups of charging stations.
- ✔ Compliant with all charging stations that communicate via OCPP.



Charging Station Control

- Change the availability, restart the charging stations, and update their firmware.
- ✔ In the event of a fault or maintenance work, charging stations can be taken out of operation or restarted remotely.
 - ✔ New firmware versions can be managed centrally and distributed to charging stations on a time-controlled basis.



Reporting

Evaluate the usage of your charging infrastructure with comprehensive reports.

Predefined reports for selection

- ✔ Charging Sessions
 - Charged Energy
 - Charging Sessions statistical summary and detailed report
- ✔ Charging Stations
 - Availability

Evaluation based on multiple filter criteria

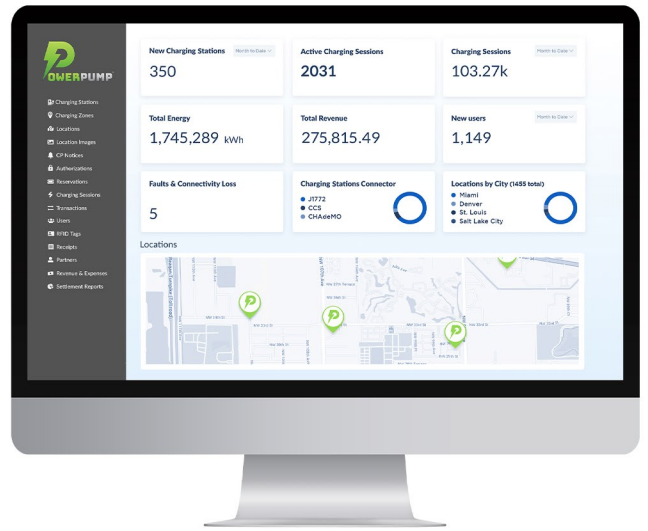
- ✔ Date range
- ✔ Charging station / location selection
- ✔ Vehicle

Reports and analytics

- ✔ Rich-feature analytics and dashboards
- ✔ Built in tools for billing, CRM and operational issues.

Export function

- ✔ CSV format or via API

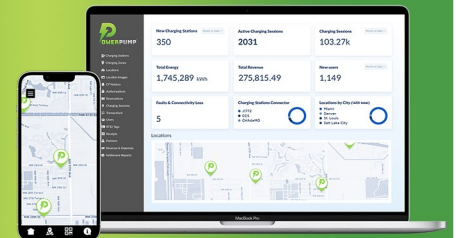


Notifications

Notifications about events occurring in charging infrastructure.

Alert options:

- ✔ Browser
- ✔ Multiple E-Mail recipients can be defined



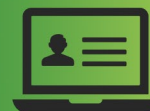
Details can be displayed in Event History

- ✔ Filtering and sorting by date
- ✔ Error Codes as defined by charging stations manufacturer



Role management

- ✔ Grant different rights to specific user groups.
- ✔ Access restriction via user accounts and role permissions.
- ✔ Customized views depending on user role.



Browser User Interface

- ✔ No software installation necessary.
- ✔ Protected via HTTPS connection.
- ✔ Support several languages.



Load Management

Manage the maximum load statically or dynamically and benefit from a variety of charging strategies.

Static load management

- ✓ Defined total power for all charging stations
- ✓ Every EV gets the same charging power
- ✓ If more EV's are added, less power is available for each EV

Dynamic load management

- ✓ Charging capacity is adapted to the building consumption
- ✓ If less electricity is consumed there, more is available for charging and vice versa
- ✓ Optimal distribution of electricity to all chargers



Billing

Log billing-relevant data from charging sessions and exchange it with payment systems via OCPI.



Versions & Credentials

Exchange information about implemented modules, protocol version and authorization.



Pricing

Price information with flexible models



Locations

Displays topology of charging infrastructure



Commands

Start new Charging Session via external authentication, e.g., App



Tokens

Exchange of (RFID) token information
Real time authorization of used token



Sessions

Real time information of charging session